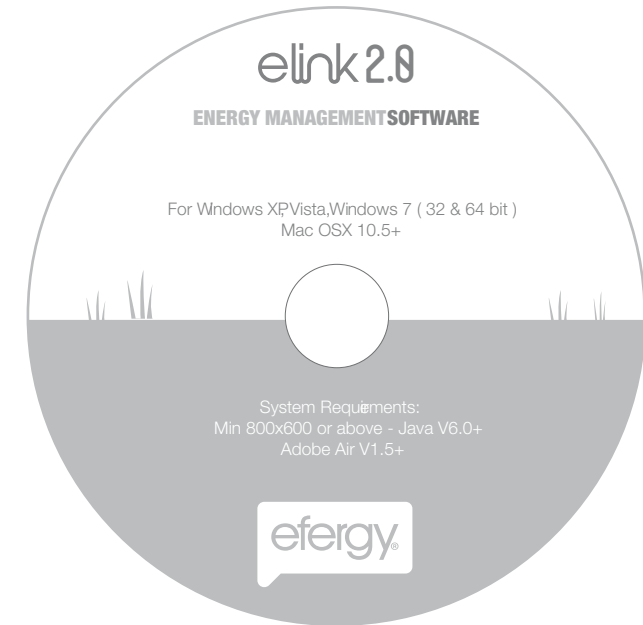


# eLink 2.0

ENERGY MANAGEMENT SOFTWARE

efergy®



MONITOR REDUCE SAVE

INSTRUCTION MANUAL

# CONTENTS

INTRODUCTION .....	2
ELINK IN THREE EASY STEPS .....	3
SELECTING YOUR DEVICE .....	5
ADJUSTING YOUR SETTINGS	
Personal Settings .....	7
Adjusting Time and Data .....	9
Energy Costs and Tariffs .....	11
Tier and Standing Charge .....	13
MONITORING ENERGY CONSUMPTION	
Summary .....	15
Current Usage .....	17
Usage History .....	19
MANAGING ENERGY CONSUMPTION	
Adding Stickies .....	21
Energy Demand .....	23
Targets & Budgets .....	25
Tariff Options .....	27
Energy Reporting .....	31
Back up and Restore .....	33

# INTRODUCTION



**elink 2.0** is an energy consumption management tool to help you increase your understanding and awareness about energy consumption. Our new version keeps the basic features and includes more sophisticated tools to help you save money. **elink 2.0** will also help you to:

- Use the data from your **efergy** wireless monitor to produce graphs and demand curves for your energy consumption
- Help compare different tariffs that could reduce energy costs
- Discover the advantages of shifting consumption to lower tariff rate periods
- Introduce ideas on energy saving plans

## How To Contact Us

If you have any questions about using your **efergy** products, please feel free to contact us, or visit the website for up to date information, downloads, and frequently asked questions.

Email your questions at [software@efergy.com](mailto:software@efergy.com)

We aim to answer all emails within 48 hours.

# ELINK IN THREE EASY STEPS



## Step 1. Installation

### Note:

- You should have Adobe Air V1.5+, Java V6.0+ pre-installed before running the installation.
- If you are re-installing the program, backup your data and uninstall any previous versions of elink software. Delete any files related to the application under elink folder in program files.
- If you are using Vista or Windows 7, check that your UAC (User Account Control) is disabled. This can be found under Control Panel, User Account Settings. Turn it off in Vista or lower it to minimum level in Windows 7 and restart your computer.  
\* **UAC can be turned back on after the installation is finished.**
- Date and time of your efergy device should be same as to your computer. If the difference is more than one hour then your computer will be unable to download any data. Please adjust this before connecting the device.

### PC

Insert the CD into your PC, run the installation setup file, follow the setup instructions.

**IMPORTANT:** In Vista and Windows 7 right click the set-up file and install by choosing '**Run as administrator**'.

### Mac

Insert the CD into your Mac, follow the setup instructions and install all the driver files.

On finishing the installation go to Step 2 to configure your settings before connecting your efergy device.

## Step 2. Adjusting Settings & Tariffs

Before downloading any data to your computer you will need to set the correct tariff rates and other details. You can find more information on how to do this under topic Adjusting your settings on following pages.

## Step 3. Collect Data From Efergy Device

Please launch or run the **elink** program before connecting your efergy device. Connect your computer to the **efergy** device with the supplied USB cable. A message will appear stating your device is now connected and the **elink** icon on top left (next to username) will change colour from grey to blue. Depending on your computer it could take 15-30 seconds for your computer to recognise your **efergy** device.

To download data click the **Collect Data** icon button on the left side under **Summary** tab.

In the event does not find the **efergy** device, unplug the USB cable wait for 10 seconds and plug it again in the same USB port or try in another USB port.

# SELECTING YOUR DEVICE

When you first start the **elink** program you will be asked to choose which device you will be using to send messages to your transmitter. Select your device from the options available to begin reviewing your energy consumption.



e2 Wireless Energy Monitor



Transmitter

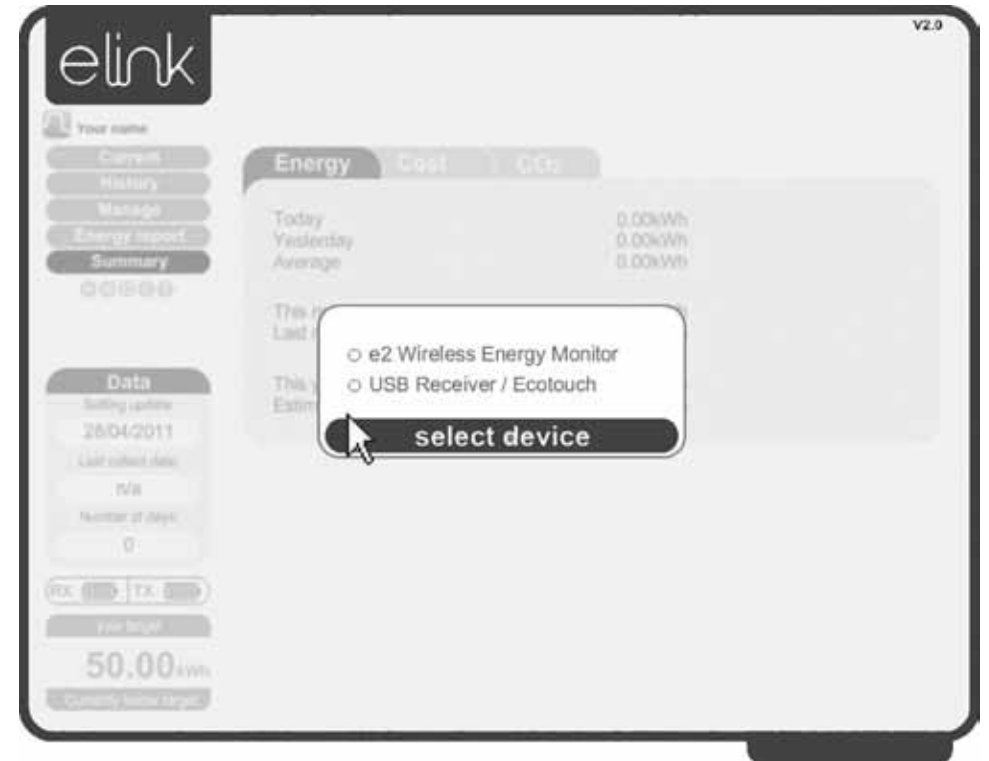
USB dongle



ecotouch

**IMPORTANT:** The values on the wireless monitor and elink software may vary from one another. Some data sets can be interpreted differently. You may find that the data on the display differ to that on the PC.

The wireless electricity monitor and elink cannot be used as a comparison to your electricity meter. Electricity meters have to conform to much stricter guidelines and testing procedure, which are not applicable to wireless monitors. All data collected from the e2 should be for reference only.



# ADJUSTING YOUR SETTINGS

## PERSONAL SETTINGS

Click on the **settings** icon below the left applications tab (under **summary**).

### User Settings

Please enter the correct information into the boxes, such as user name, country, postal code and carbon ratio (for carbon ratios please refer to your energy supplier).

### Target \*

With elink you can create your own consumption targets. Set your energy consumption target by defining the following parameters:

- Target amount: Please enter the amount for analysis.
- Your type of plan: Please choose a target setting between **kWh**, **Cost** or **Carbon Emissions**.
- Time period of your plan: Define periods for comparison – daily, weekly or monthly plans.

### Target Indicator

In the bottom left hand side of the interface you will see an indicator the displays your current usage level according to your target.

\* Setting a plan requires an understanding of your average consumption. We recommend using your monitor for a short period of time before setting a plan in order for you to benchmark your typical energy usage.

# ADJUSTING YOUR SETTINGS

## ADJUSTING TIME AND DATA

### Reset Data

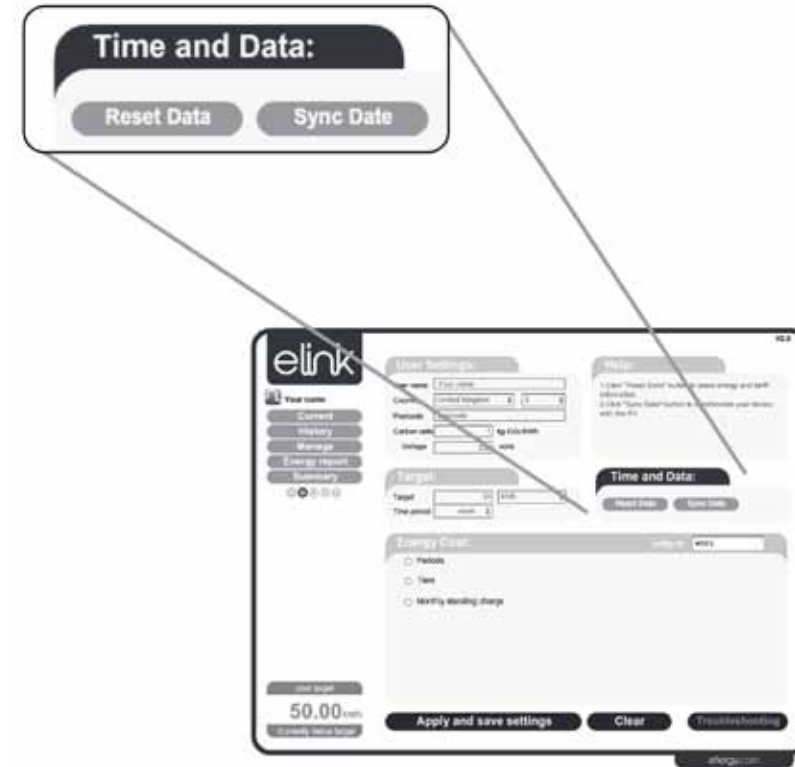
If you want to reset the data, click on the Time and Data tab and select Reset Data, a message will appear confirming your wish to erase your data, click ok.

Note: This will erase all of your current user setting and collected data. If you do not wish to delete your user settings and data click cancel. This will not delete any data stored in the devices.

### Sync Data (USB dongle/ ecotouch)

If the date and time of your **USB dongle/ ecotouch** and your PC have a difference of greater than 1 hour, then the PC/Mac will be unable to download the information. To sync your **USB dongle** connect it to your PC/Mac, click on the Time and Data bar and select **Sync Data**, a message will appear confirming your wish to sync your data, click **ok**.

Note: The **Sync Data** button only appears when the **USB dongle/ ecotouch** is connected, this button will not be available when the e2 is connected. When using the **e2** you will have to manually set the time and data on the display, then connect and collect data.



# ADJUSTING YOUR SETTINGS

## ENERGY COSTS AND TARIFFS

Before setting your tariffs please make sure you have your energy bill to hand. It contains all the information you need to get started with **eLink 2.0**.

### Utility ID

You need to allocate your tariff settings with a name or code (e.g. energy supplier) in order to establish your tariff settings. This will allow you to save tariff settings alterations and see the effect on shifting electricity suppliers.

### Multiple Tariffs

If you have dual or multiple tariff periods, click **Add period** for additional tariff intervals.

### Naming Units

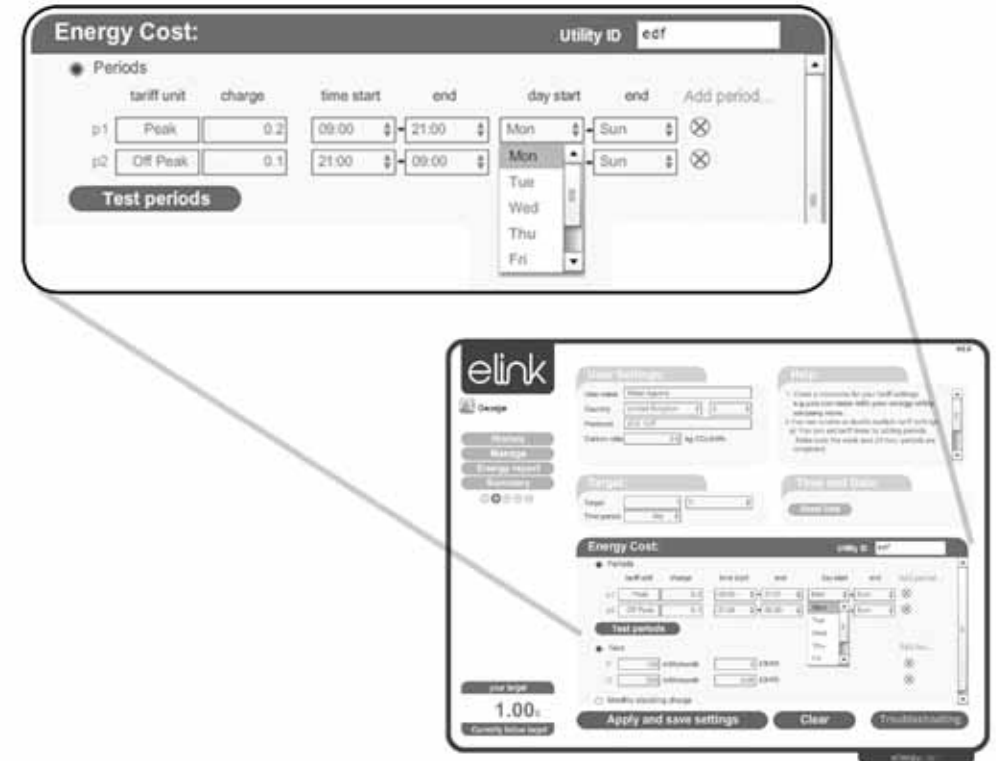
Set a name for the tariff unit, click on the **P1** tab in the first box (eg peak or off-peak). Set the **charge** in box 2, then set the **time start**, **time end**, day **start** and **day end** in the other boxes.

### Testing

To confirm your time start/end and your day start/end, click the **Test periods** button.

### Applying & Saving Your Settings

Once you have your **Periods** set up you can click **Apply and save settings**, or you can choose the **Clear** button and it will erase any settings you have input.



# ADJUSTING YOUR SETTINGS

## TIERS AND STANDING CHARGES

### Tiers

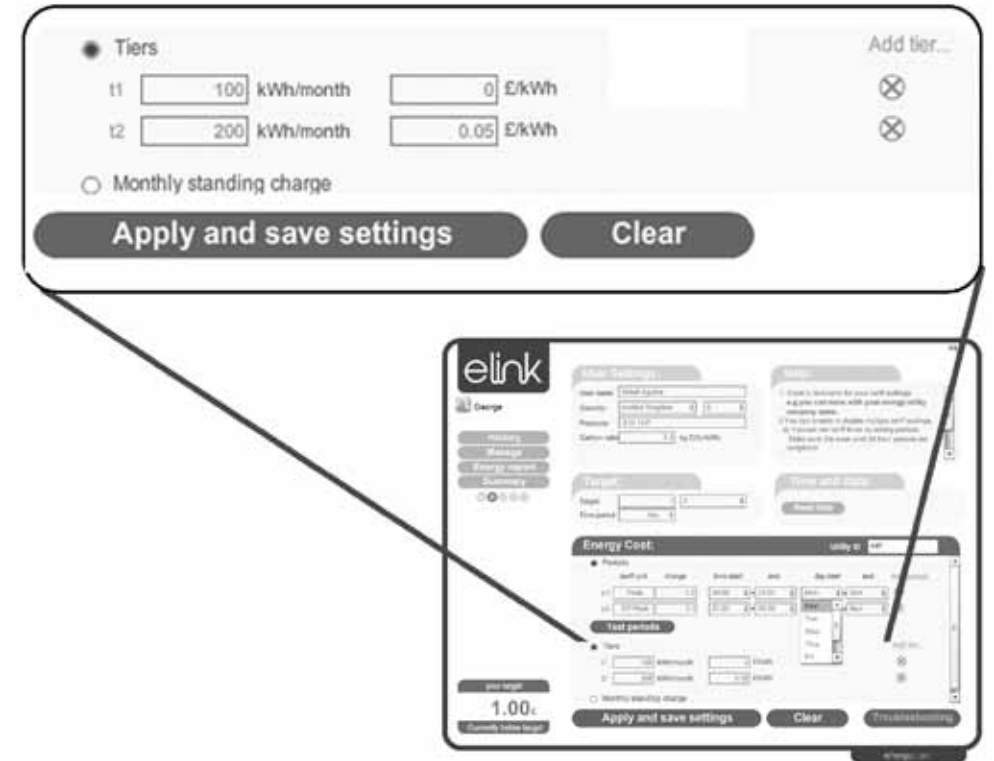
If you pay for your energy over a number of tiered rates please input this information within the appropriate textbox on the **elink** interface.

### Monthly Standing Charge

This is a fixed amount you may pay to your energy supplier. Check your energy bill to find this out. If this is given on your bill as a quarterly figure, divide it by 3.

### Applying & Saving Your Settings

Once you have your **Periods** set up you can click **Apply and save settings**, or you can choose the **Clear** button and it will erase any settings you have input.





# MONITORING ENERGY CONSUMPTION

## SUMMARY

The **Summary** page allows you to review total **Energy**, **Cost**, and **CO<sub>2</sub>**, either consumed or output at daily, monthly or yearly intervals.

This page enables you to instantly see how many resources you have consumed.

**IMPORTANT:** When using a **e2** the **Current Usage** feature is not available. The battery levels (as shown below) for the Receiver (RX) and Transmitter (TX) are also not available with the **e2**.



When using a USB Receiver / Ecotouch



When using the e2 Wireless Energy Monitor



# MONITORING ENERGY CONSUMPTION

## CURRENT USAGE (USB dongle/ ecotouch)

Once you have saved your settings click the **Current** tab and you will be taken to the **eLink** current screen. Here you can:

- See your current usage of Power (kWh)
- See what your energy is in cost / hour
- See your CO<sub>2</sub> / hour output

You will also be able to view:

- Total energy consumption today
- Electricity used today (kWh)
- Total cost of energy consumed
- Overall CO<sub>2</sub> output

**IMPORTANT:** This screen will only appear if a **USB dongle/ ecotouch** device is connected to your computer. When using a **e2** the **Current Usage** feature is not available. The battery levels for the Receiver (RX) and Transmitter (TX) are also not available with the **e2**.

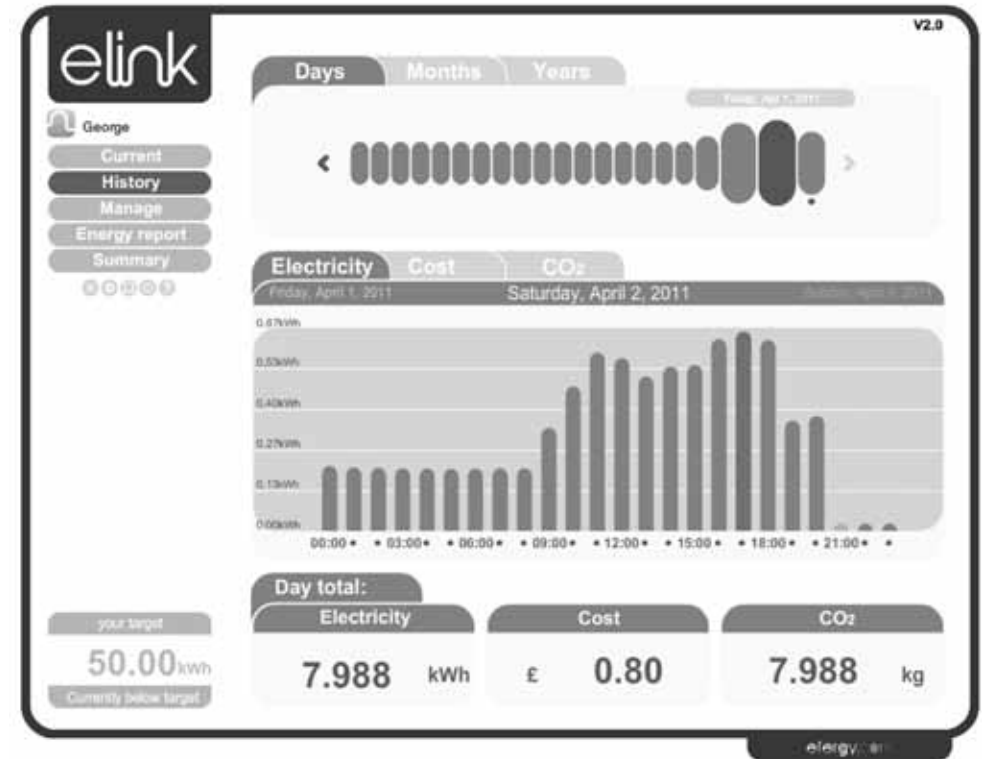


# MONITORING ENERGY CONSUMPTION

## USAGE HISTORY

Click on the **History** tab to see a review of your energy consumption history. Features include:

- Review your daily, monthly and yearly usage of your electricity, in kWh, your costs and CO<sub>2</sub>
- See a complete historical breakdown of your usage day by day, from the moment of installation, to identify peak usage periods
- **Add Sticker** - this allows you to track and follow your consumption behaviour by adding notes to points on the graph. (see page 21 for more information)



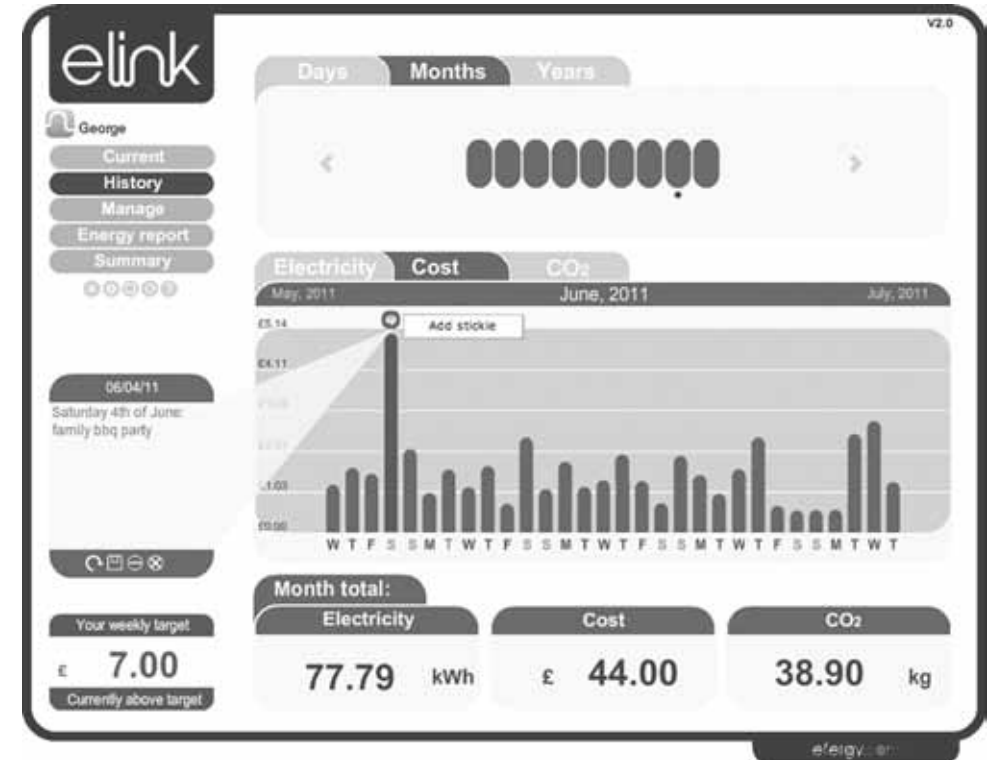
# MANAGING ENERGY CONSUMPTION

## ADDING STICKIES

The new **Add Stickers** function on the **History** page allows you to add your own personal messages to each of your energy records.

This will help you track and follow your energy behaviour in the home. This information will be recorded and displayed when you create your energy reports so others can see the details that you have added.

Click on any bar in the graph and choose the **Add Sticker** function. Next, type in a relevant message to explain this point on the graph (e.g. Family BBQ Party). Press the **save** icon below to add your sticker and press the **exit** icon to return to the graph.



# MANAGING ENERGY CONSUMPTION



## ENERGY DEMAND

The **Manage - Demand** tab allows you to review how much energy your household has consumed over various time intervals. Click the **Daily**, **Weekly** or **Monthly** tabs to display the respective data.

It also displays the estimated total cost per year and allows you to track any savings you have made by lowering consumption. These figures depend on what price point you have set your tariff data at. Additionally you can choose up to four time periods to view your comparisons graphically.



# MANAGING ENERGY CONSUMPTION

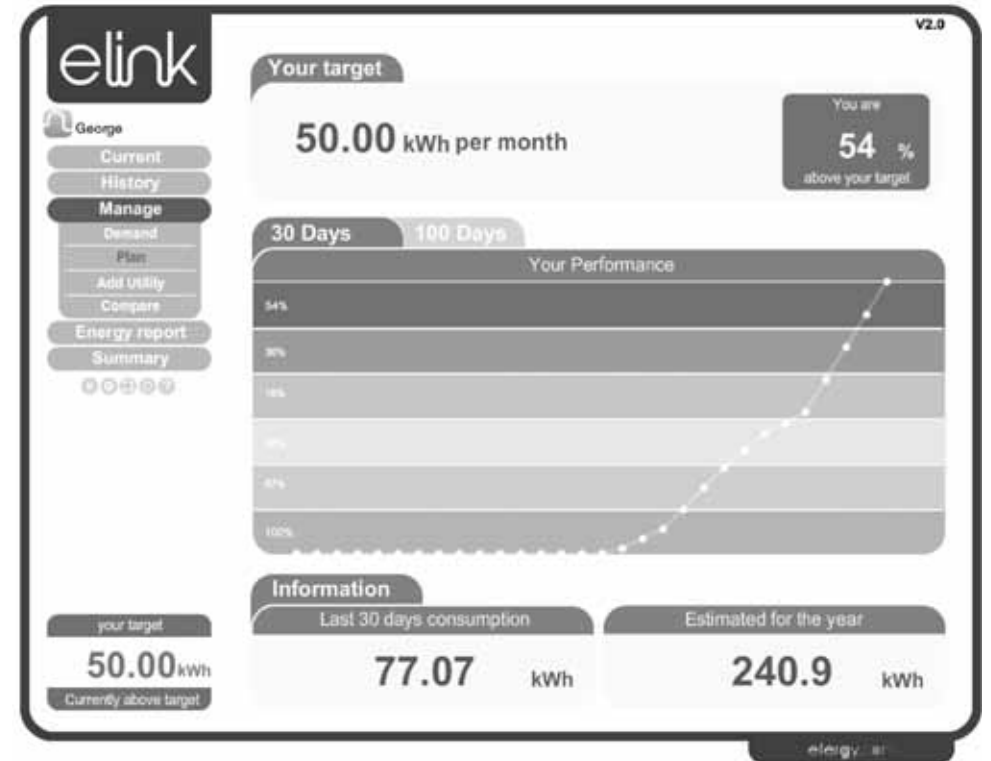


## TARGETS & BUDGETS

The **Manage - Plan** tool allows you to plan by plotting your consumption patterns within 30 and 100 day intervals.

A percentage figure charts how far above or below you are according to your usage target.

The **Information** tab also tracks how much electricity you have consumed during the selected interval as well as an estimated figure for your total consumption over the next year.



# MANAGING ENERGY CONSUMPTION

## TARIFF OPTIONS

You can use this tool to add a variety of energy providers to the **elink** system and then compare them against one another via an easy to understand graphical interface.

To add a utility click on the **Add Utility** tab and then input the relevant data into each textbox. You can also assign a number of tiers or standing charges to each provider in order to correctly calculate an accurate cost.

Once this has been input, click **Add** to add the new utility provider to your list and then click **Save Changes** to save and exit.

You can also delete any unwanted providers previously input using the tools on this page.



# MANAGING ENERGY CONSUMPTION

## TARIFF OPTIONS CONTINUED

This tool allows you to compare tariffs on offer between different energy companies to find the ideal price for you. Make sure to input the appropriate data beforehand via the **Add Utility** tool (see pages 27 – 28).

Select from a variety of energy suppliers and usage periods to calculate how much you could save by either staying with your current provider or switching to another.

Once you have added this information you can click **Compare** to see the difference





# MANAGING ENERGY CONSUMPTION



## ENERGY REPORTING

This unique feature allows you to easily create daily or monthly energy reports. Simply select the dates you want to capture and create your personalized PDF and Excel documents.

While creating the energy reports you can also share your experiences through an email application integrated within the **elink** software. Simply use the text field at the bottom of the page to type a personalized message to whoever you like via their email address - click **next** and **send email** and your reports will be automatically forwarded to them.



# MANAGING ENERGY CONSUMPTION

## BACK UP AND RESTORE

### Backup

To backup your data click on the **Backup** icon (under the **Summary** tab). Select **Backup** then make a New Folder. Label or name the folder according to your preference and then click 'OK'. **"Data backup successful."** will appear, **Click OK** to complete this procedure.

### Restore

To restore your data click on the Backup icon (under the Summary icon). Select Restore. Then select the appropriate previous Folder and click **OK**. **"Data restore successful. Please quit and restart eLink."** will appear, Click OK to complete this procedure and restart **eLink**.

**Note:** When **Restoring** your data remember to select the appropriate Folder (Do not select any files within that folder) before clicking **OK**.

### Cancel

Select **Cancel** if you wish to exit.

